



**Papua New Guinea
National Strategy
to Prevent and Respond to
Gender Based Violence
2016-2025**



Vision

An inclusive, peaceful society where the Government, in partnership with its citizens, embraces diversity, equality and equity, recognizes, respects and promotes the rights of all citizens, and secures just and sustainable development for all.

Mission

The Government of Papua New Guinea, in partnership with all its key stakeholders, will prioritize prevention of, and response to Gender Based Violence to enable a quality of life without fear of violence.

Objective 1.

To ensure that by 2025 the Government of PNG has a functioning GBV governance and institutional structure supporting the achievement of zero tolerance towards GBV, aligned with the PNG Development Plan, Papua New Guinea Vision 2050, and with the Sustainable Development Goals 2016-2030.

Objective 2.

To standardize and institutionalize data collection, and facilitate ongoing in-depth research to support evidence-based planning, budgeting and programming to end gender-based violence.

Objective 3.

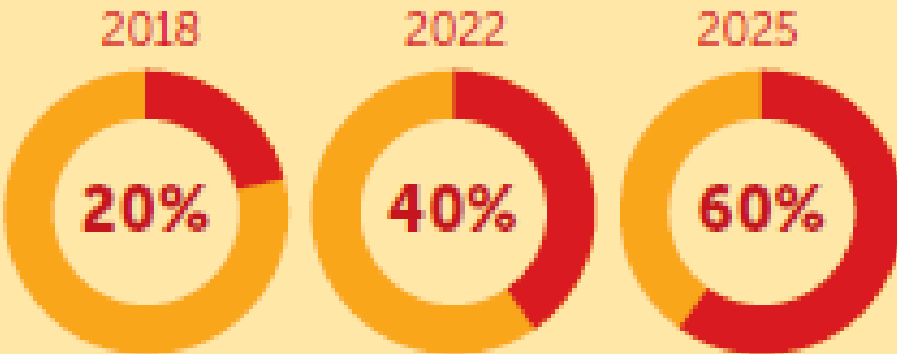
To ensure quality, continuity and sustainability of coordinated responses, referrals and service delivery for survivors of gender-based violence.

Objective 4.

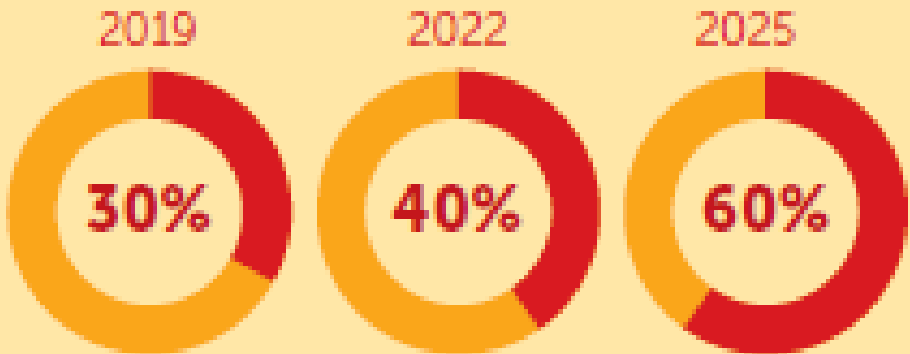
To scale-up, decentralize, and standardize inclusive, quality initiatives and messaging for prevention of gender-based violence at all levels and in all sectors of society.

KEY INDICATORS

PERCENTAGE OF SURVIVORS OF GBV ECONOMICALLY SELF-RELIANT



EFFECTIVE REFERRAL AND JUSTICE FOR REPORTED GBV CASES

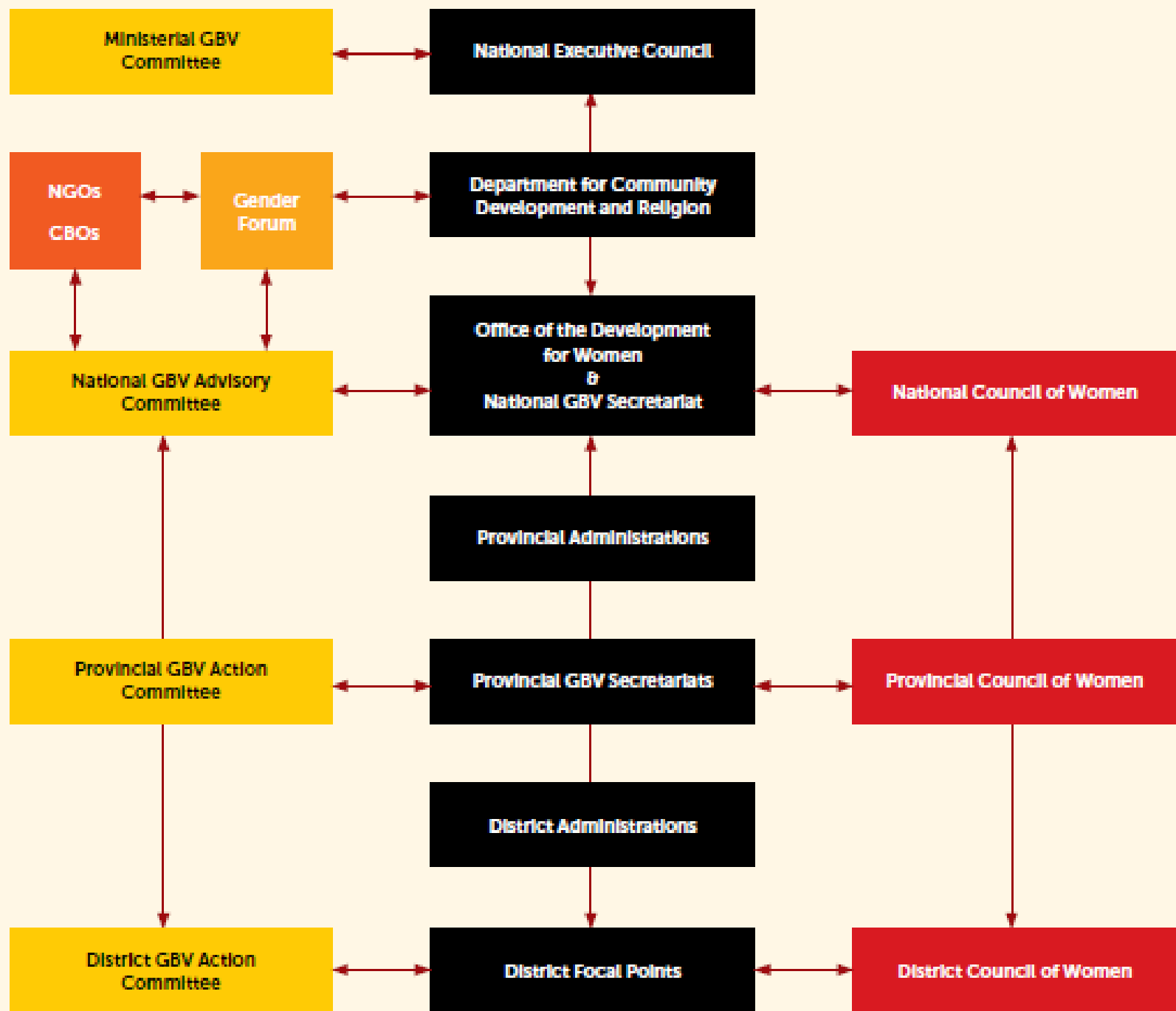


INCREASE OF INNOVATIVE PREVENTION PROGRAMMES



KEY ELEMENTS OF STRATEGY

- BROAD BASED and MULTISECTORAL approach (coordination)
- HUMAN RIGHTS BASED
(inclusive and survivor at the center at all times)
- TARGETING THE CAUSES OF GBV
(moving from FSV to GBV)
- INSTITUTIONALIZATION
(for long-term sustainability and quality)



KEY ELEMENTS ctd

- EVIDENCE BASED planning, budgeting and programming
database – research – monitoring and evaluation – prevalence study
- QUALITY
national GBV training institute + 2 satellite centers for continued capacity building and certification of trainings
- SUSTAINABLE FUNDING (long-term support to NGOs, FBOs, etc..)
Trust Fund + mainstreaming across key government entities
- DECENTRALIZATION is the focus
provincial GBV action Committee Secretariats and District Focal Points are priorities – lean GBV secretariat

KEY ELEMENTS ctd

- SOCIAL SUPPORT
 - 2 National long term Shelters
 - Social protection (max. 12 months) for survivors
- REINTEGRATION SUPPORT
 - Employment and educational skills (preparation towards reintegration)
- PREVENTION
 - National behavioural change campaigns and interventions informed by local realities
- KNOWLEDGE SHARING and CROSS FERTILIZATION (sharing knowledge and resources across provinces)

BUDGET

- Focus on streamlining/mainstreaming
- Result – multiplier effect

National GBV Secretariat	112,485,797.72
Contributions by Departments	207,186,519.81
Contributions at Provincial and District levels	77,876,046.34
	397,548,363.87

Budget analysis 2016-2025 (PGK)

